



BETTER BROADBAND FOR OXFORDSHIRE

Connecting homes and businesses



November 2014

The Better Broadband for Oxfordshire partnership between Oxfordshire County Council, BT and Broadband Delivery UK (BDUK) has now delivered fibre-enabled broadband to more than 16,000 homes and businesses across the county.

Did you know?

More than **620km of fibre and duct** has been installed by Openreach - BT's local network business - for the Better Broadband for Oxfordshire programme

85 fibre broadband cabinets out of a planned 400+ are 'live' across West Oxfordshire, South Oxfordshire, Cherwell and Vale of White Horse districts. Some cabinets have gone live ahead of schedule whilst delivery dates for other cabinets have been delayed whilst engineering issues such as wayleaves are resolved.

On target: The programme is on track to deliver fibre enabled broadband to 90% of Oxfordshire premises by December 2015 and to a further 5% in by the end of 2017 (subject to district council investment confirmation).

Communities now connected



Seen a stickered cabinet? 46 new cabinets have gone 'live' across the county since August 2014, connecting rural and urban communities with access to better broadband.

If you spot a large white sticker on a cabinet like this one in rural Enstone, it's live. Contact your internet service provider to enquire about an upgrade to fibre-enabled broadband.



BETTER BROADBAND FOR OXFORDSHIRE

Connecting homes and businesses

These 46 cabinets have been enabled since August 2014, and are now live across Oxfordshire:

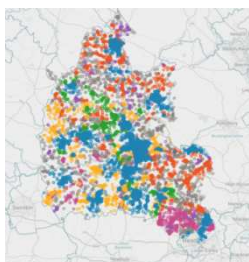
Exchange Area	Cabinet Number	Covering parts of these communities
Kidlington	15, 20	Yarnton
Summertown	4, 35, 36	Woodstock Rd, Little Clarendon St, Banbury Rd/Summerfield Rd junction
Woodstock	5	Woodstock
Witney	25	High St. Witney
Wallingford	6, 21	Crowmarsh Gifford, Wallingford
Bletchington	2, 3	Kidlington, Weston-on-the-Green
Charlbury	2, 4	Charlbury
Abingdon	39, 55	Abingdon
Boars Hill	2, 3, 4, 8, 9, 13, 14	Boars Hill, Kennington, Wootton
Cumnor	2, 5, 9, 11	Cumnor, Farmoor
Oxford	31, 33, 79	Parks Rd, Ferry Hinksey Rd, North Hinksey Ln
Rowstock	5, 6, 17	Harwell, Didcot
Sutton Courtenay	1, 3, 5	Sutton Courtenay, Abingdon
Cholsey	1, 3, 4	Cholsey, Moulsoford, Wallingford
Chipping Norton	5, 13	Over Norton, Chipping Norton
Enstone	2	Enstone
Eynsham	4, 9	Witney, Eynsham
Kingham	1	Churchill
Stanton St John	3	Stanton St John
Ramsden	2	Ramsden

More cabinets coming soon!

A further 38 cabinets are due to go live in the next three months serving these communities:

Abingdon, Ascott-under-Wychwood, Aston, Bampton, Botley, Burford, Bicester, Charlbury, Chipping Norton, Charlton-on-Otmoor, Cholsey, East Hanney, Headington, Horspath, Kidlington, Kennington, Milton-under-Wychwood, Oxford, Wantage, Wheatley, Wootton

Spotlight on your postcode



Find out where your parish falls within our current deployment plan by using our interactive postcode map, available online at www.betterbroadbandoxfordshire.org.uk/postcode-map The map is updated monthly to reflect the most current information from BT.

However, as with any programme of this size, the plans for the current scope of coverage may change as BT deploys the physical infrastructure work necessary to roll-out fibre enabled broadband across the county.



BETTER BROADBAND FOR OXFORDSHIRE

Connecting homes and businesses

How to get faster broadband

You may have noticed a new green cabinet appear in your neighbourhood or receive a mailshot from us informing you that superfast fibre enabled broadband is now available in your area. So what do you do now?

1. Price checker comparison websites tell you what level of service you can get from your premise. Enter your postcode and **landline phone number** to see what broadband speeds and deals are available to you. Please be aware that with some postcodes, particularly for new housing developments, the tool may not work.
2. Once your area has been upgraded with fibre-enabled broadband you need to order the enhanced service from an ISP (Internet Service Provider) - **it is not automatically turned on for you!** If you contact an ISP, state that you wish to order '**fibre enabled/superfast broadband**' otherwise they may offer you a slower broadband service. Your chosen ISP should be able to offer any technical assistance necessary to access superfast/fibre enabled broadband.
3. **Broadband comparison sites** (see right) can be helpful to find a fibre broadband deal that suits you.

Please note ISPs need to make a sizeable investment to offer fibre enabled superfast broadband to customers (installation of equipment at the telephone exchange). Hence, in some cases, smaller ISPs

may choose not to offer a service from all cabinets in an area.

ISPs are usually told well in advance that an area has been upgraded and that they can now offer fibre enabled/superfast broadband there. However, we are aware of instances where ISPs have not updated their information systems and have informed residents that it is unavailable. Hence, please try several ISPs, most will have up to date information about availability.

Please remember that we aim to remain impartial and cannot recommend an ISP to you. All the links here are third party websites and therefore, we cannot guarantee the accuracy of the information they provide.

Cable

www.cable.co.uk/compare/broadband

Broadband Choices

www.broadbandchoices.co.uk

Broadband Genie

www.broadbandgenie.co.uk/broadband

USwitch www.uswitch.com/broadband

Money Supermarket

www.moneysupermarket.com/broadband

Go Compare

www.gocompare.com/broadband

Openreach page on ISPs www.superfast-openreach.co.uk/buy-it-now

ISPReview

www.ispreview.co.uk/review/top10.php
carry out regular surveys of ISPs and rank them based on feedback from customers. However, many of the ISPs listed only operate in certain parts of the UK and may not be offering superfast broadband services in your area.



The companies supercharging Oxfordshire

BT, Gigaclear and Virgin Media provide an update on their work to upgrade broadband across the county.



BT commercial deployment of fibre in Oxfordshire

Better Broadband for Oxfordshire is a partnership between Oxfordshire County Council, BT and BDUK. It builds on the existing commercial footprint in the county. The BT commercial programme is solely funded by BT and is completely separate from the Better Broadband for Oxfordshire partnership. However, the technology is the same and both have access to over 140 different service providers. Whether a business or resident in Oxfordshire, via the Openreach 'open' network, you will have the ability to choose which supplier to use. The Openreach fibre network is now available to more than 185,000

homes and businesses in Oxfordshire from BT's commercial deployment.

This Openreach network is available on an equal basis to all fibre broadband service providers, ensuring competitive pricing and products for Oxfordshire residents and businesses. To upgrade, contact your chosen broadband service provider. Any community not covered by the Broadband for Oxfordshire partnership, or BT's commercial deployment can still have access to the 140+ service providers via a community funded solution where Openreach will work directly with the community to agree how best to achieve this. For more info please contact Peter Cowen peter.r.cowen@bt.com

Gigaclear Ultrafast Fibre Broadband in Oxfordshire

Gigaclear is an Oxfordshire based, fibre-to-the-premises broadband provider delivering the fastest broadband in the country to rural communities in England. Gigaclear delivers up to 1000Mbps for uploads as well as downloads. Gigaclear has installed fibre broadband to more than 4,000 properties across 20 villages in Oxfordshire, with more to come.

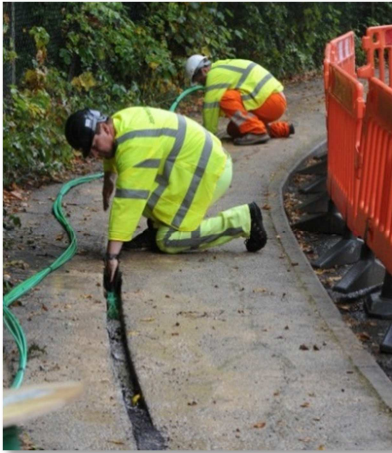
For many, working from home with less commuting is now a reality while others appreciate the ability to do almost whatever they want online, whenever they want, without interfering with others in the same property. Popular uses are Skype video calls to family and work colleagues, backing-up and sharing precious data, and of course, uninterrupted catch up TV.





BETTER BROADBAND FOR OXFORDSHIRE

Connecting homes and businesses



Virgin Media supercharges new Oxfordshire homes

Virgin Media has teamed up with housing developers in and around Oxford to bring superfast broadband and home entertainment to a number of new housing sites in the area including:

Bovis Homes - Lime Road, Botley; Persimmon Homes - Tilbury Lane, Botley; Thomas Homes - Broadfield House, Oxford; College & Country - Cowley Road; City & Country - RAF Caversfield; Persimmon Homes - Longfield; David Wilson Homes - Morton Avenue

Superfast connectivity is also available to businesses and public sector organisations across Oxfordshire alongside a wide range of communications services through Virgin Media Business.

1,500 businesses gain speed advantage

Thanks to Better Broadband for Oxfordshire more than 1,500 businesses across the county can now access broadband speeds greater than 24mbps.

Access to superfast broadband speeds had immediate benefits for the customers and staff of The Manor hotel and restaurant in Weston-on-the Green when the village was upgraded through the Better Broadband for Oxfordshire programme in August 2014.

“Since the upgrade, guests have access to a good quality Wi-Fi connection - a great improvement on relying on mobile signals and connections which timed out.”

Front Manager at The Manor Nick Vincent explains: “Since the upgrade, guests have access to a good quality Wi-Fi connection - a great improvement on relying on mobile signals and connections which timed out and lead to a great deal of frustration.

“But it’s not just the guests who are benefitting, myself and the other members of the team are enjoying the rewards. Even

when working on the desktop computer connected directly to the router, we were struggling to get things done. Now, we can use the computer, laptops and our mobile devices happily and easily.”

“It really has been fantastic and has given the whole village a real lift. Village life can feel a little isolating at times so to have all the available communications working really means a lot to so many.”

